



**NORTENT**  
NORWAY

**LY 2**



☐☐ **THE EXCEPTIONALLY GOOD  
FEELING OF BEING FREE  
TOGETHER WITH NATURE. THIS  
IS WHAT NORTENT IS ALL  
ABOUT.** ☐☐



## Ly 2

Ly 2 has a strong construction that can withstand severe weather conditions and snow-load. A very light shelter to carry in the bag. Our inspiration for this tent comes from our long walks in Norwegian mountains where weight always is essential and at the same time a gear providing a safe and secure shelter.



Ly 2 is designed to be a light tent, but still a very functional and safe tent with plenty of room for two people together with all their gear. You can even bring your dog. We believe having a pleasant environment inside the tent enhances the complete outdoor experience.

# SEAM SEALING

The flysheet is 100% waterproof. But like every other quality tent with this type of fabric the seams will increase their waterproofness and strength if to be lubricated with a mix of silicone. You may choose not to do this as the seams are already very waterproof when you receive the tent from us But hey. Why not...

Tents made of silnylon are not seam sealed with lubricant at the factory. Sealing the seams is a one-time procedure performed by the end user. With the seam sealing completed you have a fully waterproof tent. The quality and durability of lubricant sealing is far better than taped seams which the PU coated tents and silicone/PU coated tents are equipped with. (You will find an instruction video on our website if you choose to seamseal).



A black and yellow tent is pitched on a grassy hillside under a cloudy sky. The tent is the central focus, with its entrance open, revealing a yellow interior. The background shows a grassy hillside with some rocks and a cloudy sky. The text 'THE FIGHT AGAINST CONDENSATION' is overlaid on the image in large, white, outlined letters.

# THE FIGHT AGAINST CONDENSATION

**WHEN THE HUMID AIR HITS THE COOLER TENT WALLS IT IS TRANSFORMED INTO LIQUID WATER DRIPPING DOWN FROM THE WALLS AND CEILING**

**Here are three solutions:**

- 1. Heating.** Hot air absorbs more moisture..
- 2. Inner tent.** The humid air passes through the inner tent and leaves this area dry .
- 3. Ventilation.** Humid air is transported out of the tent.

# TAKING CARE OF YOUR TENT



## ADJUSTING AND ADAPTING THE TENSION

It is essential to release the tension of the flysheet during the day equally to what it was tightened to the evening before. If you do not do this the flysheet will tighten further with powerful tension. At worst it may have stretched the fabric to a degree beyond breaking point. Rule of thumb; never let the flysheet become tight like a drumhead.

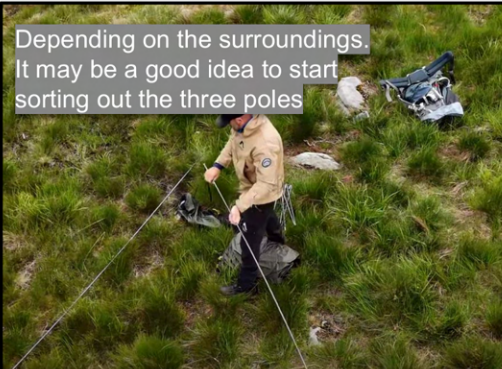
# PITCHING YOUR TENT 2

A dark green tent is pitched on a grassy field. The tent is a simple, dome-like structure with a dark green flysheet. It is secured to the ground with several yellow guy lines. The tent is set up on a patch of grass with some bare earth visible. The background is a dense field of green grass.

Our tent poles are of high quality and are very flexible and strong. They are tested in the real world under high stress for optimal and correct understanding of its durability. But nevertheless they are lightweight aluminum and could break if not handled correctly. For best use, strength and durability of your pole, ensure that each section is properly inserted into place, and ensure that pole sections do not pull apart during pitching, as the resulting gaps can lead to breakage.

Silnylon is "alive". Well not completely, but silnylon is a very dynamic fabric. It stretches, moves, contracts and retains depending on temperature and humidity. For flexibility it is one of the best fabrics to choose for the flysheet. With an elastic material the external forces will be more evenly distributed, with less degree of the wind tugging and pulling on the flysheet. Because the fabric is dynamic it means you have to adjust the tension on the flysheet according to the temperature and humidity.

Depending on the surroundings. It may be a good idea to start sorting out the three poles



Find a suitable ground and stretch the tent out lengthwise.



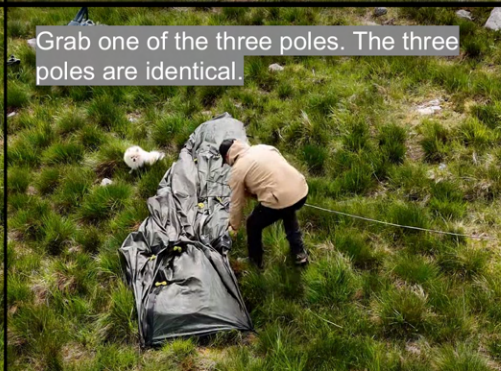
Identify the two stakeouts at the one end of the tent.



Stake the pegs at the two stakeouts.



Grab one of the three poles. The three poles are identical.



Insert it into one of the sleeves.



Next, insert the pole into corresponding cup. Ensure the adjustable strap is extended to its maximum length to make this easier.



Tighten the strap as much as possible.



Then the second pole. Follow same approach



Ensure the pole is fully inserted into the bottom of the sleeve.



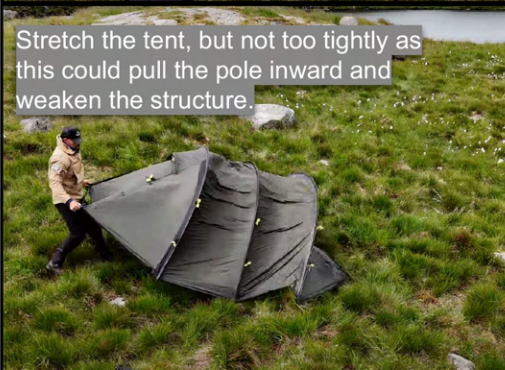
Then the third pole. Same approach.



Identify and grab the two stakeouts on the opposite side of the tent.



Stretch the tent, but not too tightly as this could pull the pole inward and weaken the structure.



Stake the two stakeouts on this side on the tent.



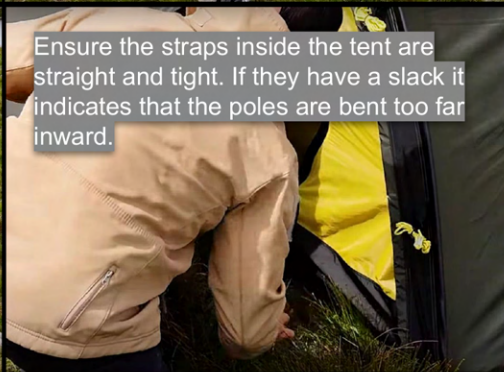
It may be beneficial to leave some slack on the adjustable straps of the stakeouts, allowing you to tighten them once the tent is fully pitched.



Check that poles and tent are pitched appropriate. Adjust accordingly.



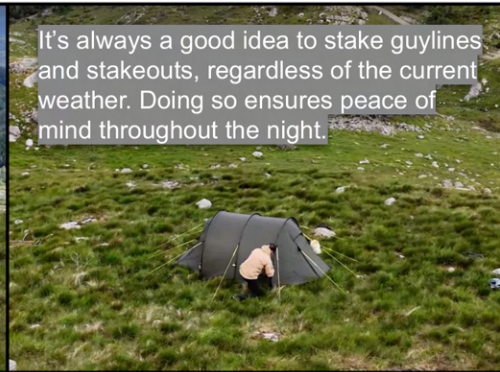
Ensure the straps inside the tent are straight and tight. If they have a slack it indicates that the poles are bent too far inward.



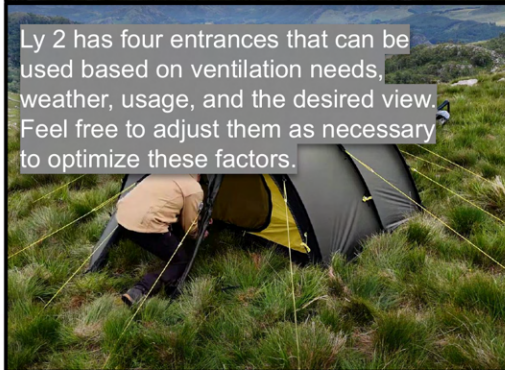




Secure the tent with guylines and stakeouts depending on weather and surroundings.



It's always a good idea to stake guylines and stakeouts, regardless of the current weather. Doing so ensures peace of mind throughout the night.



Ly 2 has four entrances that can be used based on ventilation needs, weather, usage, and the desired view. Feel free to adjust them as necessary to optimize these factors.



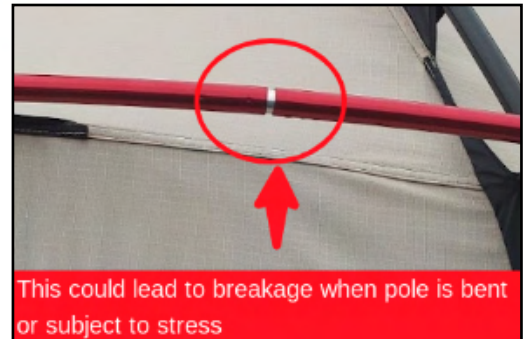
The vents is functioning both as vents and as protective overhang against rain.



Thanks to the caps positioned over the entrances.

## Important note about pole usage.

Our tent poles are of high quality and are very flexible and strong. They are tested in the real world under high stress for optimal and correct understanding of its durability. But nevertheless they are lightweight aluminum and could break if not handled correctly. For best use, strength and durability of your pole, ensure that each section is properly inserted into place, and ensure that pole sections do not pull apart during pitching, as the resulting gaps can lead to breakage.



This could lead to breakage when pole is bent or subject to stress



**NORTENT AS**

Norway

[info@nortent.no](mailto:info@nortent.no)

[www.nortent.com](http://www.nortent.com)

 Instagram

 facebook