



NORTENT
NORWAY

VERN 1 PC

☐☐ **THE EXCEPTIONALLY GOOD
FEELING OF BEING FREE
TOGETHER WITH NATURE. THIS
IS WHAT NORTENT IS ALL
ABOUT.** ☐☐



VERN 1 PC

Vern 1 PC has a strong construction that can withstand severe weather conditions and snow-load. A very light shelter to carry in the bag. Our inspiration for this tent comes from our long walks in Norwegian mountains where weight always is essential and at the same time a gear providing a safe and secure shelter.



Vern 1 PC is designed to be a light tent, but still a very functional and safe tent. Even though this is a single person tent, there is plenty of space for all your gear. You can even bring your dog. We believe having a pleasant environment inside the tent enhances the complete outdoor experience.

POLYCOTTON

A tan polycotton tent is pitched in a wooded area near a lake. The tent is the central focus, with its curved black poles and tan fabric clearly visible. The background shows a calm lake and dense green trees. The foreground is filled with low-lying green bushes and shrubs. The overall scene is a natural outdoor setting.

With breathable polycotton fabric you avoid condensation on the inside walls of the outer tent. Most tent fabrics need some kind of waterproof coating to make it waterproof. But with polycotton much of the "waterproofing" work is done by the fiber itself. A cotton canvas is not completely waterproof from the factory. It needs to be exposed to water so that the fibers in the fabric expand and thus make the fabric 100% waterproof. Be it from exposure to rain or water from a garden hose, this process is called weathering.

POLYCOTTON



**THE INDDOR CLIMATE IS MUCH BETTER
THAN A SYNTHETIC FIBER AND TENT CAN
OFFER**

Because the polycotton fabric is ventilating and breathable, the need for an inner tent is considerably reduced. One of the tasks of an inner tent is to keep the wet and damp tent walls away from the persons living in the tent. This is why Vern 1 PC do not need an inner tent thus having a much larger inside living area

TAKING CARE OF YOUR TENT

A tan and black tent is pitched in a grassy field. The tent is a dome-style with a mesh flysheet. The background is a dense forest of green trees. The foreground is filled with tall grass and some purple wildflowers.

**ALWAYS STORE YOUR TENT
IN A COOL, DRY PLACE.**

Proper cleaning is key to maintaining your tent. After each expedition, make sure to remove all dirt, debris, and sand from the tent by shaking it out or using a soft brush. You should also clean the tent floor and flysheet with mild detergent and water. Avoid using harsh chemicals or bleach, as these can damage the fabric and zippers

It's also important to make sure your tent is completely dry before storing it. Moisture can cause mold and mildew to grow, which can weaken the fabric and cause unpleasant odors. Set it up in a well-ventilated area to dry before storing it in its carrying bag

Direct sunlight over a period of time can cause the fabric of the tent to fade, weaken, and even become brittle. The UV rays can also cause the color to fade. Vern 1 PC is treated with UV protection to help mitigate this effect, but it is still important to keep the tent out of direct sunlight as much as possible. Use a shaded area, or use a tarp or other shading device to protect it from the sun.

PITCHING YOUR VERN 1 PC

Our tent poles are of high quality and are very flexible and strong. They are tested in the real world under high stress for optimal and correct understanding of its durability. But nevertheless they are lightweight aluminum and could break if not handled correctly. For best use, strength and durability of your pole, ensure that each section is properly inserted into place, and ensure that pole sections do not pull apart during pitching, as the resulting gaps can lead to breakage.



Vern 1 PC has three poles. Start with the shortest pole.



Insert the shortest pole into the sleeve in the middle of the tent.



Then insert the pole into the corresponding cup. Tighten the strap all the way.



Insert one of the two crossing poles into the two corresponding small sleeves.



Then attach it to the corresponding clips.



Do the exact same thing with the second crossing pole.



Also. Attach the two velcro-straps to the poles.



Vern 1 PC should now be super-stable. Move the tent freely to an appropriate place.



The polycotton fabric is breathable. But open the vents for increased airflow.



Stake the guyline located at the crossing point of the crossing poles. Wrap the strap around the poles.



On both sides.



Then the eight stakeouts all around the tent.



Depending on the weather. Use the two guylines on the sides of the tent.



You will now find Vern 1 PC firmly and securely attached to the ground.



You will find Vern 1 PC to be a very flexible tent in regards to your different needs.



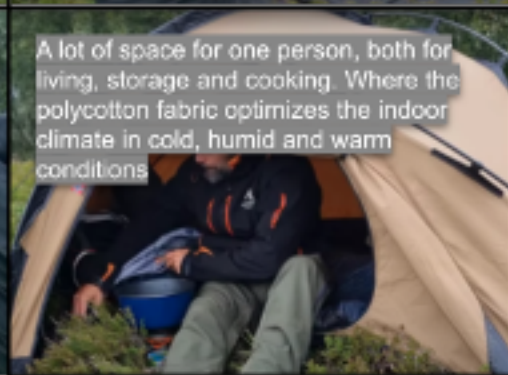
Multiple fasteners for the entrance making the entrance very versatile.



Multiple fasteners for the entrance making the entrance very versatile.



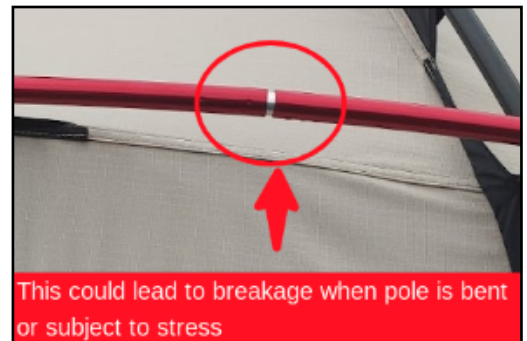
A lot of space for one person, both for living, storage and cooking. Where the polycotton fabric optimizes the indoor climate in cold, humid and warm conditions.





Important note about pole usage.

Our tent poles are of high quality and are very flexible and strong. They are tested in the real world under high stress for optimal and correct understanding of its durability. But nevertheless they are lightweight aluminum and could break if not handled correctly. For best use, strength and durability of your pole, ensure that each section is properly inserted into place, and ensure that pole sections do not pull apart during pitching, as the resulting gaps can lead to breakage.



This could lead to breakage when pole is bent or subject to stress



NORTENT AS

Norway

info@nortent.com

www.nortent.com

 Instagram

 facebook